

3 Disassembly and Reassembly

This section of the service manual describes the disassembly and reassembly procedures for the MH17WS LCD Monitor.

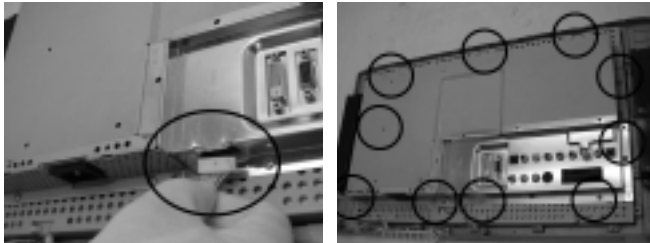
⚠ WARNING: This monitor contains electrostatically sensitive devices. Use caution when handling these components.

3-1 Disassembly

- ⚠ Cautions:**
1. Disconnect the monitor from the power source before disassembly.
 2. When IP-BOARD has a defect, the whole PCB ASS'Y, not a single part, should be replaced.
 3. R/Cover opening jig : BH81-00001A



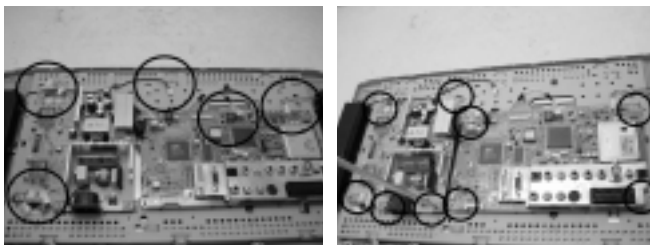
1. Place the monitor face down on cushioned table. Remove 3 screws from girp on the stand and remove back cover. While pressing the back cover, lift up the stand.
(See Illustrations)



2. Disconnect function cable from the shield and remove 11 screws from the shield.

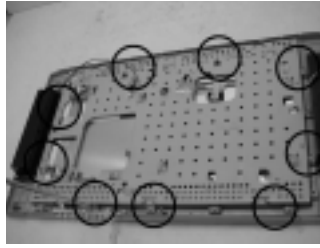


3. Lift up the shield PCB and disconnect inverter holder from the PCB board.

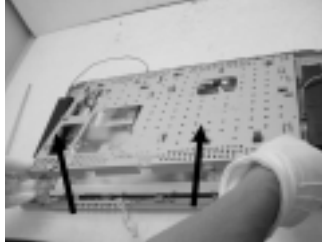


4. Disconnect 2 speaker cables, LVDS cable and inverter calbe from the PCB board and remove 9 screws from the PCB board.

3 Disassembly and Reassembly



5. Lift up the PCB board and remove 9 screws from the shield panel.



6. Lift up the shield panel and disconnect panel from the cover front.

3-2 Reassembly

Reassembly procedures are in the reverse order of disassembly procedures.